

City of Bethlehem, Pennsylvania

APPLICATION FOR CERTIFICATE OF APPROPRIATENESS (COA)

Building address 444 Main St.
Owner of building Moravian College Phone
Owner's email & mailing address
Applicant Amber Donato Phone:
Applicant's email & mailing address

APPLICANT MUST ATTEND MEETING FOR CASE TO BE HEARD.
USE THE CHECKLIST ON THE BACK OF THIS APPLICATION TO ENSURE YOUR SUBMISSION IS COMPLETE.

Historic & Architectural Review Board - Application form, photographs, and drawings (if necessary) must be submitted by 12:00 Noon on the last Wednesday of the month in order to be placed on the agenda for the next meeting.

South Bethlehem & Mount Airy Historic Conservation Commission - Application form, photographs, and drawings (if necessary) must be submitted by 12:00 noon on the second Monday of the month in order to be placed on the agenda for the next meeting.

1. PHOTOGRAPHS - Photographs of your building and neighboring buildings must accompany your application.

2. TYPE OF WORK PROPOSED - Check all that apply. Please bring any samples or manufactures specifications for products you will use in this project.
Trim and decorative woodwork
Siding and Masonry
Roofing, gutter and downspout
Windows, doors, and associated hardware
Storm windows and storm doors
Shutters and associated hardware
Paint (Submit color chips - HARB only)
Skylights
Metal work
Light fixtures
Signs
Demolition
Other Roof screen

3. DRAWINGS OF PROPOSED WORK - Required drawings must accompany your application. Please submit ONE ORIGINAL AND TEN (10) COPIES OF DRAWINGS, PHOTOGRAPHS, APPLICATION FORM, AND ANY SPECIFICATIONS
Alteration, renovation, restoration (1/4 or 1/8"=1'0" scale drawings required IF walls or openings altered.)
New addition (1/4" or 1/8"=1'0" scale drawings: elevations, floor plans, site plan)
New building or structure (1/4" or 1/8"=1'0" scale drawings: elevations, floor plans, site plan)
Demolition, removal of building features or building (1/4" or 1/8"=1'0" scale drawings: elevation of remaining site and site plan)
A scale drawing, with an elevation view, is required for all sign submittals

4. DESCRIBE PROJECT - Describe any work checked in #2 and #3 above. Attach additional sheets as needed.
1. New exterior lighting to highlight tenant signage and entryway.
2. Roof screen along Heckewelder Dr. to limit visibility of rooftop mechanical equipment; height of screen to be discussed at meeting

5. APPLICANT'S SIGNATURE Amber Donato DATE: 9/18/19

Moravian College
444 Main Street
Exterior Tenant Lighting
HARB Submission
October 2, 2019

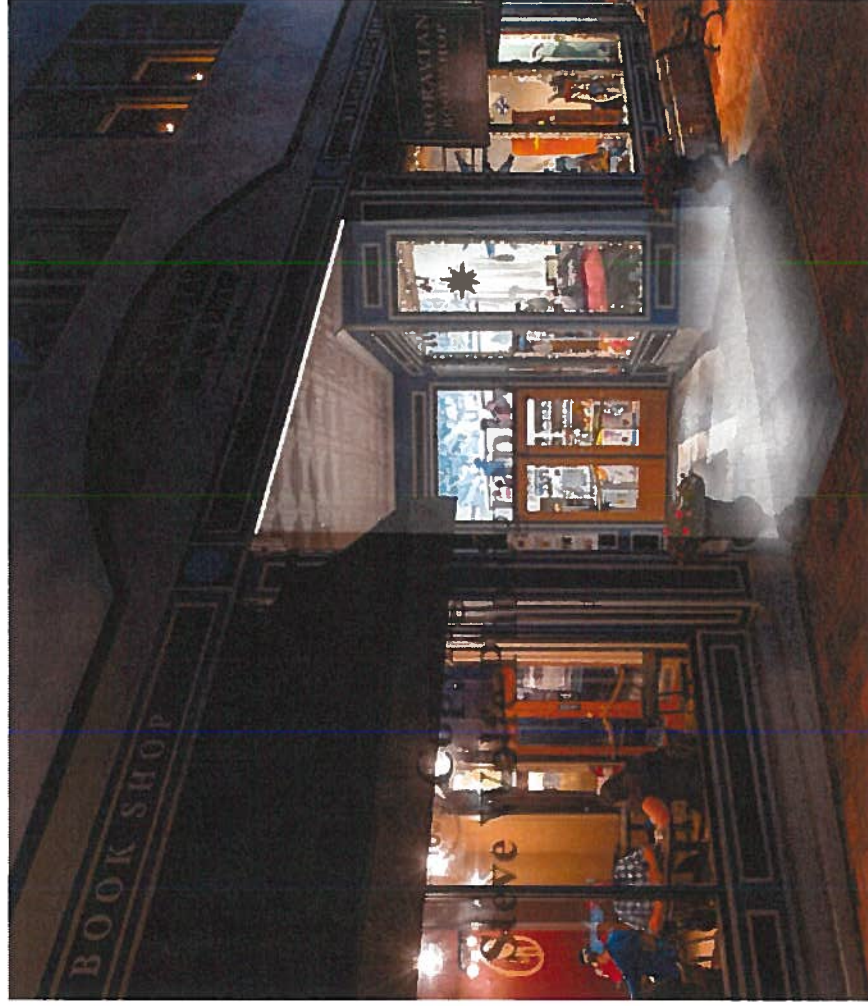
LIGHT #1



Spotlight on Exterior Hanging Signs

Will help location be more visible from the street and sidewalk
Helps to highlight business signs after dark

LIGHT #2



Linear Down Light over Entrance Alcove

Helps to illuminate entrance threshold from sidewalk
Mounted to underside of ceiling, concealed by the exterior wall

TARGETTI

JUPITER MINI PROJECTOR

Professional Compact Adjustable LED Flood Light

Concept: Ultra compact adjustable LED projector.

Materials: Finished Ferrite Grey anodized polished aluminum body. Aluminum front ring. Bevelled extra-clear front glass. Stainless steel bracket fixed to the body for adjustability.

Optic: Precision optic system with PMMA lenses for the spot, flood and wide flood versions with a light cut system integrated into the front glass.

Mounting: Fixed onto an adjustable yoke bracket.

Power Supply: Remote Class 2 120V-277VAC power supply required, see page 2 for options.

Installation: Pre-cabled with 10ft direct burial 18ga 2 Conductor Cable for Connection to remote power supply.

Wattage: 3W

Color Temperature: 2700°K / 3000°K / 3500°K / 4000°K

CRI: Ra84

Lumens: **3000°K** **4000°K**

Spot 17° = 298Lm 319Lm

Flood 30° = 291Lm 311Lm

Wide Flood 60° = 303Lm 324Lm

Lumen Maintenance (L70): 50,000hrs

Calculation for LED fixtures are based on measurements that comply with IES LM-80.

Voltage: 24V DC

IP Rating: IP67

IK Rating: IK10

Certifications: cULus Class 2 Wet Location Listed

Tested in accordance with LM-79-08

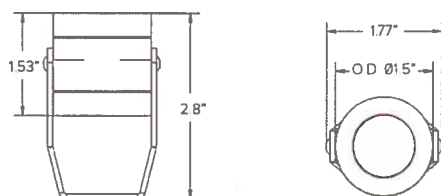
^ATitle 24 commercial installation compliant.

Warranty: 5 year limited warranty



PRODUCT CODE	DRIVER	FINISH	LENS	WATTAGE	COLOR TEMP	VOLTAGE	+	OPTICAL ACCESSORY	+	DRIVER
JP – JUPITER Mini Projector	R – Remote Driver	FE – Ferrite Grey	SP – Spot 17° FL – Flood 30° WF – Wide Flood 60°	L1 – 3W	27 – 2700K 30 – 3000K 35 – 3500K 40 – 4000K	24 – 24V DC	+	LV – Anti-glare honeycomb louver	+	Required (See Pg 2)

Views



TARGETTI

JUPITER MINI PROJECTOR

INSTALLATION ACCESSORIES

1E0995FE	Ferrite painted peg for ground anchorage. Dimensions 4.33"L
-----------------	--



1E0995FE

MAX FIXTURES PER DRIVER

Fixture Wattage	Driver Wattage							
	3W	40W	60W	96W	90W	2X90W	3X90W	100W
	10	16	25	24	48	72	26	53

Power Supply (REQUIRED)	Type	Wattage	Input/Output Voltage	Dimmable	IP Rating	Output	Dimensions
DEL60PWM	ELECTRONIC PWM DRIVER STANDALONE, UL LISTED ENCLOSURE PROVIDED BY OTHERS	60W	120-277V / 24V	0-10V/PWM 10%	IP67	UR CLASS 2	5.9" X 2.09" X 1.38"
DEL90PWM	ELECTRONIC PWM DRIVER STANDALONE, UL LISTED ENCLOSURE PROVIDED BY OTHERS	90W	120-277V / 24V	0-10V/PWM 10%	IP67	UR CLASS 2	6.73" X 2.48" X 1.48"
DEDD10010	ELECTRONIC 0-10V DRIVER STANDALONE, UL LISTED ENCLOSURE PROVIDED BY OTHERS	100W	120-277V / 24V	0-10V DIMMING 0.1%	IP20	UR CLASS 2	6.02" x 1.97" x 0.91"
DELV40124D	ELECTRONIC LOW VOLTAGE TRANSFORMER	40W	120-277V / 24V	PHASE (120V ONLY) /0-10V DIMMING 10%	IP66 / NEMA4 ENCLOSURE	UL CLASS 2	11" x 4" x 2.21"
DELV60124D	ELECTRONIC LOW VOLTAGE TRANSFORMER	60W	120-277V / 24V	PHASE (120V ONLY) /0-10V DIMMING 10%	IP66 / NEMA4 ENCLOSURE	UL CLASS 2	11" x 4" x 2.21"
DELV96124D	ELECTRONIC LOW VOLTAGE TRANSFORMER	96W	120-277V / 24V	PHASE (120V ONLY) /0-10V DIMMING 10%	IP67 / NEMA4 ENCLOSURE	UL CLASS 2	11" x 4" x 2.21"
DELX601241CPWM	ELECTRONIC PWM DRIVER	60W	120-277V / 24V	0-10V/PWM 10%	IP67 / NEMA3R ENCLOSURE	UL CLASS 2	10" x 10" x 4"
DELX901241CPWM	ELECTRONIC PWM DRIVER	90W	120-277V / 24V	0-10V/PWM 10%	IP67 / NEMA3R ENCLOSURE	UL CLASS 2	10" x 10" x 4"
DELX1802242CPWM	ELECTRONIC PWM DRIVER	2X90W	120-277V / 24V	0-10V/PWM 10%	IP67 / NEMA3R ENCLOSURE	UL CLASS 2	12" x 12" x 4"
DELX2703243CPWM	ELECTRONIC PWM DRIVER	3X90W	120-277V / 24V	0-10V/PWM 10%	IP67 / NEMA3R ENCLOSURE	UL CLASS 2	12" x 12" x 4"
PS060	LUTRON H-LUME PREMIER 0.1% CONSTANT VOLTAGE DRIVER WITH UL LISTED ENCLOSURE	96W	UNIVERSAL 120-277 VAC	H-LUM DIMMABLE 0.1%	IP20/NOM CERTIFIED	UL CLASS 2	10.5" x 5.5" x 2"

¹ Dimensions include enclosure with mounting bracket.

* Constant voltage drivers 50/60HZ, voltage regulated with short circuit protection. Operating temperature -40 C- 80° C

* Installation of power supply must be compliant to Class 2 installation standards. Refer to NEC and local building code requirements.

* Consult factory for additional driver options (ie: DMX, DALI, wattage, size, shape, Lutron, ELDO, or others).

TARGETTI

JUPITER MINI PROJECTOR

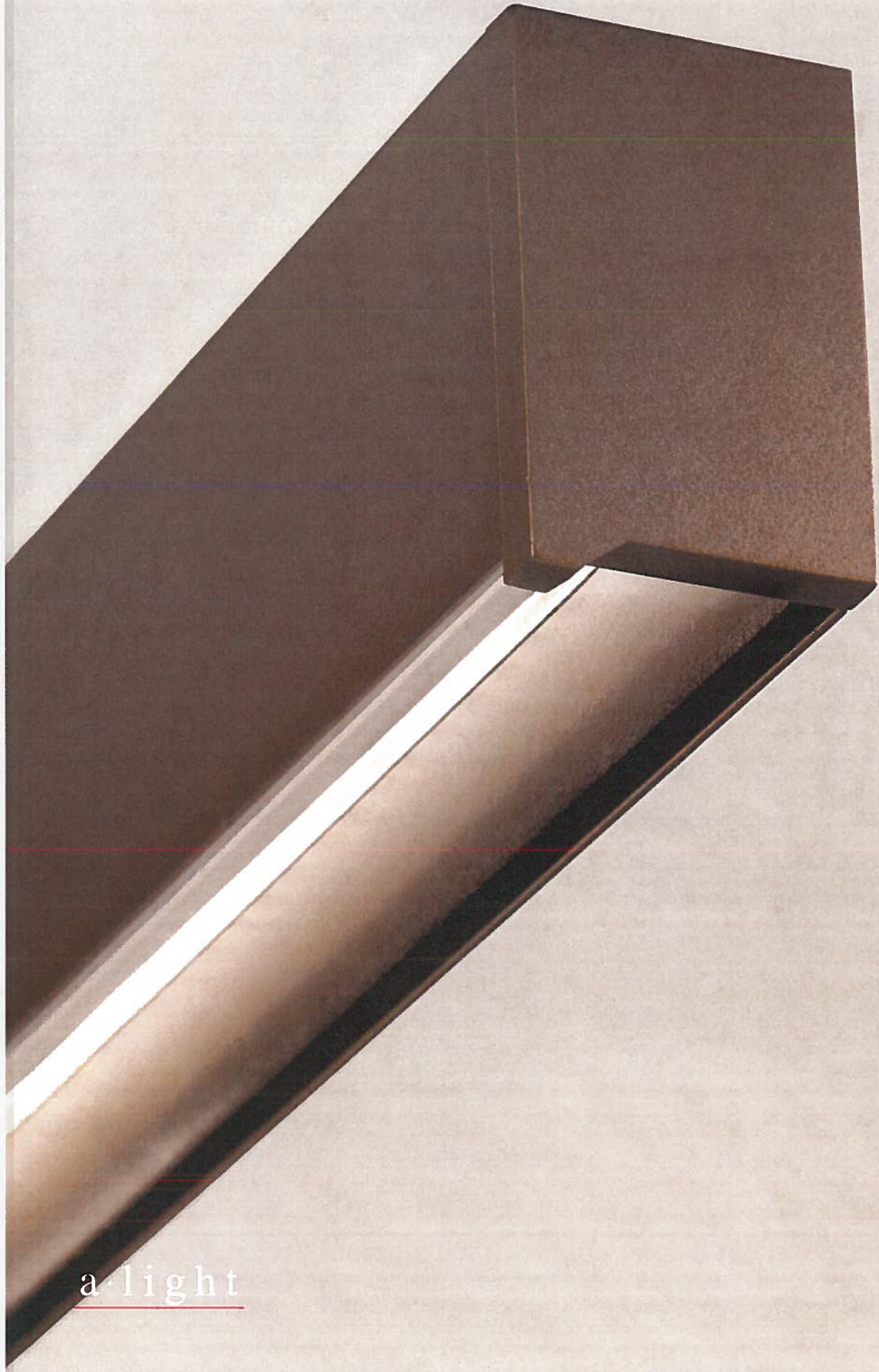
Photometry

SPOT			POLAR GRAPH	CONE OF LIGHT			
Fixture Power	3W	3W		(Ft)	Max	Med	
Fixture Output	298Lm	319Lm				ftcd	ftcd
Kelvin Temp	3000°K	4000°K			10.00	20	13
Beam Spread	SP 17°	SP 17°			8.00	32	20
IMax	5771cd/k/m	5771cd/k/m			6.00	57	36
Efficacy	99 Lm/W	106 Lm/W			4.00	127	80
			2.00		509	322	

FLOOD			POLAR GRAPH	CONE OF LIGHT			
Fixture Power	3W	3W		(Ft)	Max	Med	
Fixture Output	291Lm	311Lm				ftcd	ftcd
Kelvin Temp	3000°K	4000°K			10.00	11	7
Beam Spread	FL 30°	FL 30°			8.00	17	11
IMax	3009cd/k/m	3009cd/k/m			6.00	30	19
Efficacy	97 Lm/W	103 Lm/W			4.00	66	42
			2.00		256	169	

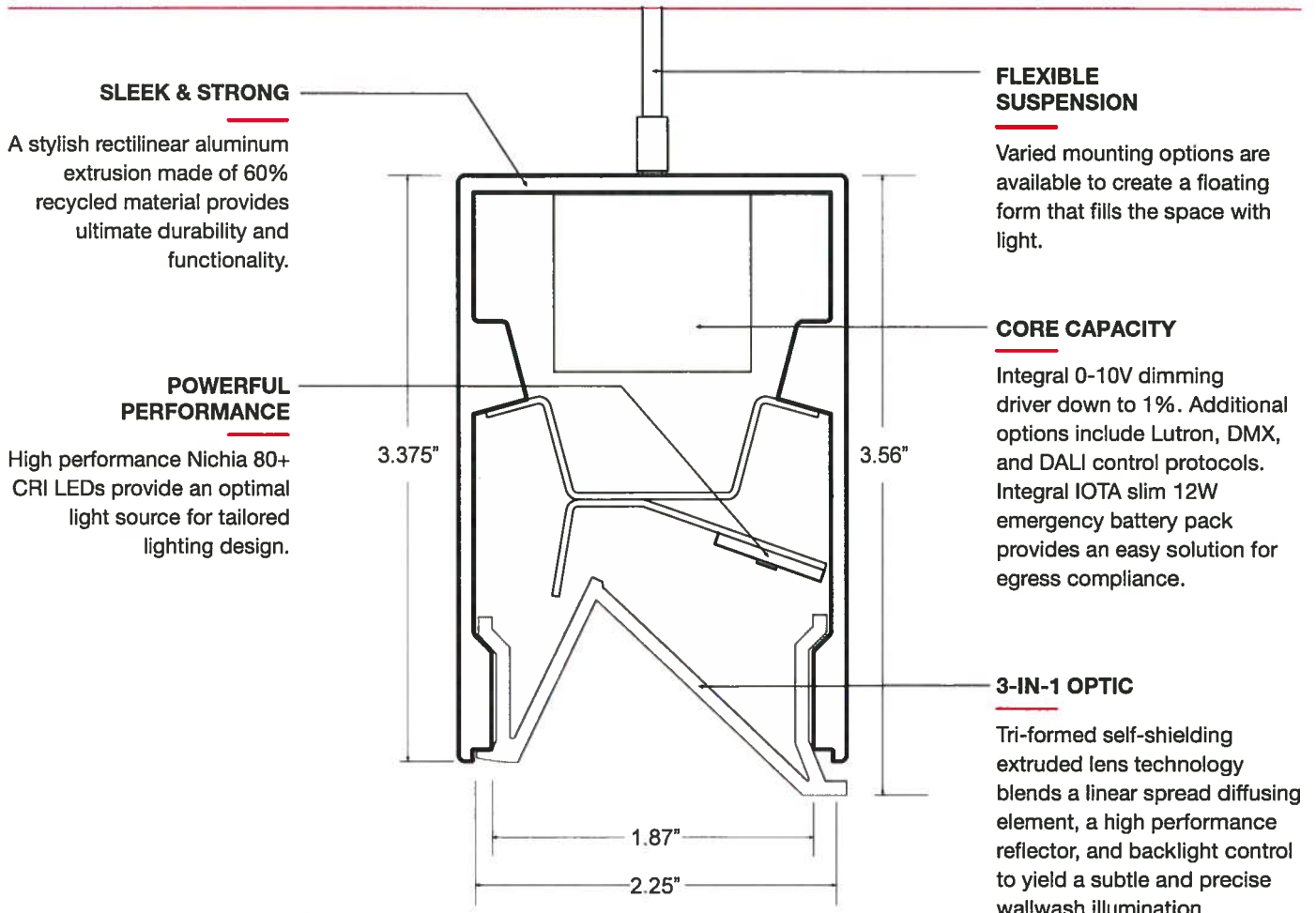
WIDE FLOOD			POLAR GRAPH	CONE OF LIGHT			
Fixture Power	3W	3W		(Ft)	Max	Med	
Fixture Output	303Lm	324Lm				ftcd	ftcd
Kelvin Temp	3000°K	4000°K			10.00	4	2
Beam Spread	WFL 60°	WFL 60°			8.00	6	3
IMax	1040cd/k/m	1040cd/k/m			6.00	10	6
Efficacy	101 Lm/W	108 Lm/W			4.00	23	13
			2.00		92	50	

LIGHT #2



a·light

ACL8



SLEEK & STRONG

A stylish rectilinear aluminum extrusion made of 60% recycled material provides ultimate durability and functionality.

FLEXIBLE SUSPENSION

Varied mounting options are available to create a floating form that fills the space with light.

POWERFUL PERFORMANCE

High performance Nichia 80+ CRI LEDs provide an optimal light source for tailored lighting design.

CORE CAPACITY

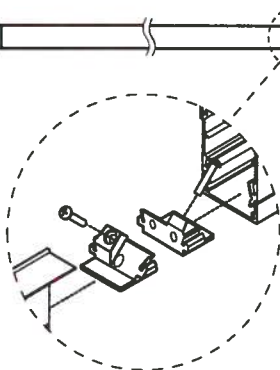
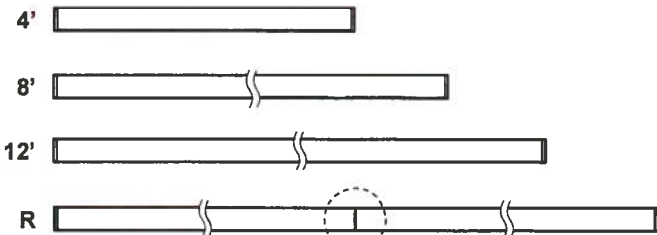
Integral 0-10V dimming driver down to 1%. Additional options include Lutron, DMX, and DALI control protocols. Integral IOTA slim 12W emergency battery pack provides an easy solution for egress compliance.

3-IN-1 OPTIC

Tri-formed self-shielding extruded lens technology blends a linear spread diffusing element, a high performance reflector, and backlight control to yield a subtle and precise wallwash illumination.

ELEMENTS

Elements is a simplified product line comprised of 4', 8', and 12' nominal length fixtures that can be joined to create continuous rows.



For rows over 12' (R) fixtures will be shipped in sections. Joining hardware for field installation is provided.

INTEGRATIONS

Integrations is a comprehensive product line comprised of nominal and exact length fixtures and continuous rows.



CUSTOM

A completely custom ordering process allowing unique modifications is available through collaboration with Design Assist.

LIGHT OUTPUT

DISTRIBUTION

Direct Asymmetric

OUTPUT

LH: High output - 10 W/ft
 LS: Standard output - 5 W/ft
 C: Custom tuned output - Specify Wattage

LIGHT LOSS FACTORS

LH: Baseline
 LS: 50%
 4000K: Baseline
 3500K: 97%
 3000K: 93%
 80+CRI: Baseline
 90+CRI: 80%

PHOTOMETRIC DATA

DIRECT ASYMMETRIC
 LH - 4000K - TRI-FORMED LENS

Lumens: 413 lm/ft
 Input watts: 9.6 W/ft
 Efficacy: 43 lm/W

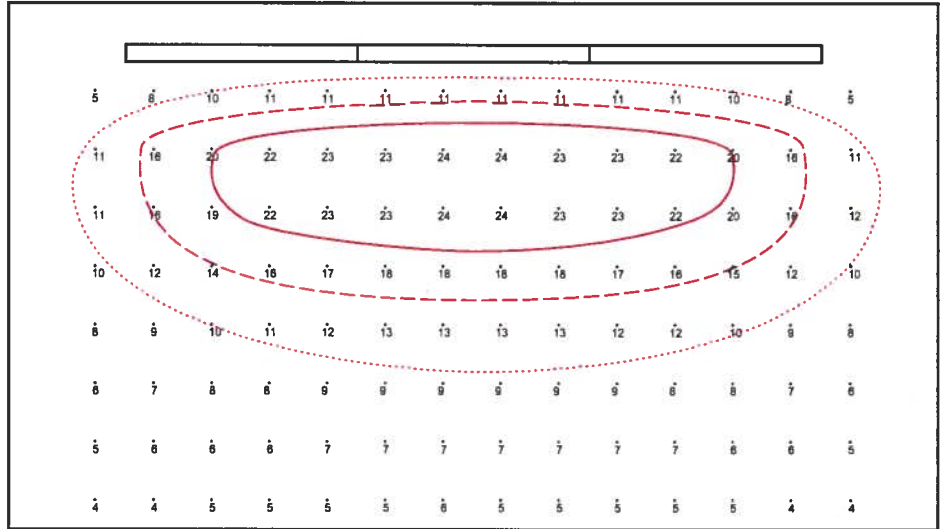
DLH ————
 DLS - - - - -



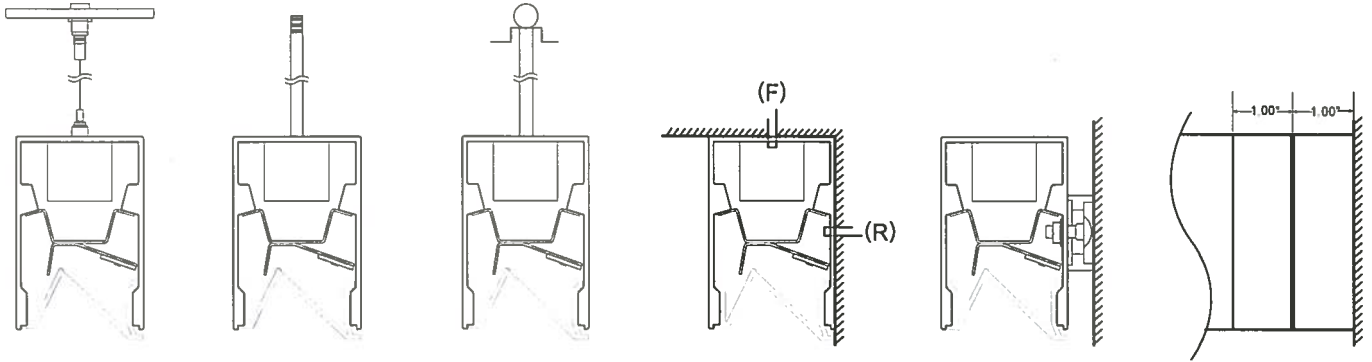
SAMPLE INSTALLATION - ACCENT WALL

LH DOWN / 4000K

Wall height: 9 ft
 Reflectance: 80% / 50% / 20%
 Mounting height: 8 ft A.F.F.
 Distance from wall: 2.5 ft
 Fixture length: 12 ft
 Calculation grid: 1 ft x 1 ft
 Calculation plane (vertical): On wall
 Average Illuminance (E_v): 12 fc
 Uniformity: 6.0:1 (max/min)

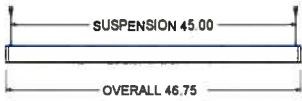


TOP VIEW
 20 fc ————
 15 fc - - - - -
 10 fc ······

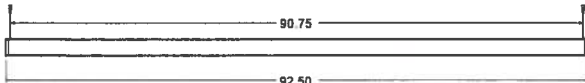


(S) Aircraft Cable (P) Rigid Stem (PV) Swivel Stem (F) Ceiling Mount (M) Mullion Blocks (J) Span
 (R) Direct wall mount (JS) Partial Span

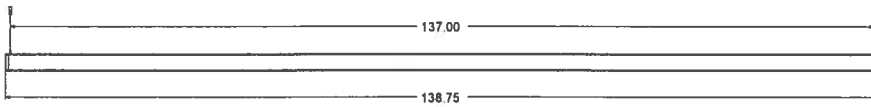
MOUNTING LENGTHS



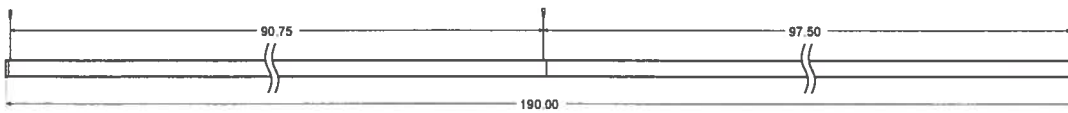
NOMINAL 4'



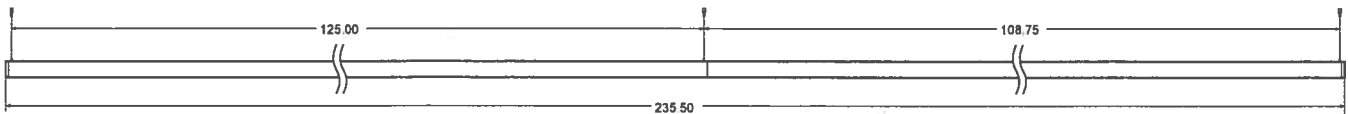
NOMINAL 8'



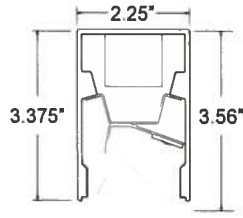
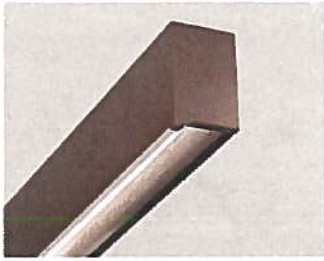
NOMINAL 12'



NOMINAL 16'



NOMINAL 20'



ORDERING CODE

ACL8
TF

PROJECT INFO _____ DATE _____
TYPE _____ QUANTITY _____

PERFORMANCE AT 4000K

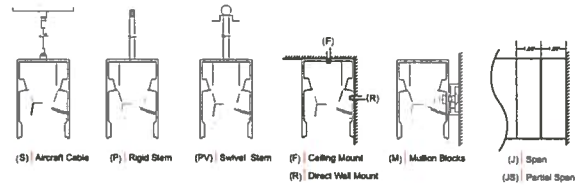
	NOMINAL LUMEN OUTPUT	INPUT WATTS	EFFICACY
OUTPUT			
High	413 lm/ft	9.6 W/ft	43 lm/W
Standard	206.5 lm/ft	5 W/ft	43 lm/W

Custom tuned output available from 25% to 125% of high output. Please consult factory for custom lumen output and wattage.

LIGHT LOSS FACTORS

	OUTPUT	LED CCT	CRI
BASELINE	LH	4000K	80+ CRI
	LS - 50%	3500K - 97%	90+ CRI - 80%
		3000K - 93%	

MOUNTING OPTIONS



ACL8	TF				
SERIES	LENGTH	OUTPUT	LED CCT	VOLTAGE	DIRECT ASYMMETRIC OPTICS
ACL8	Nominal Length* M_ Exact Length**	LS LED Standard Output LH LED High Output C_ LED Custom Output*	30 3000K 35 3500K 40 4000K	U Universal 120V - 277V 3 347V	TF Tri-Formed Self-Shielding Lens

*Specify in feet to the nearest foot (i.e. 12)
**Specify in inches to the nearest 1/8 (i.e. M180.125)
*Available from 25% to 125% of LED High Output

MOUNTING	FINISH	DIMMING	EMERGENCY	OPTIONS
S Aircraft Cable* P_ Rigid Stem** PV Swivel Stem** R Direct Wall Mount M_ Mullion Blocks*** F Ceiling Mount JS Partial Span J Full Span	T a-lightanium™ W White B Black O_ Other*	D Standard 0-10 dimming* D1 HiLume Ecosystems 1% (LDE1) D3 Other Dimming**	EC Emergency - circuited E_ Emergency - battery*	M Multi-Circuit* R Right Endcap Feed L Left Endcap Feed N New York City Code Q Wet Location** CRI 90+ CRI

*Standard 48" field adjustable cable, specify length to nearest inch if over 48". Black power cord provided for black and a-lightanium finish and white power cord provided for all other fixture finishes, unless otherwise specified.
**Indicates stem length to nearest inch, 1.00" minimum.
***Enter "1" for 1" depth. Enter "5" for 1/2" depth.
*Specify RAL#
*Dimming to 1% stated for standard 0-10v dimming
**Specify model/series
*Factory-installed emergency battery pack. Specify desired quantity of batteries. Not available on fixtures < 4' length. Not available for 347V. See technical data for more information.
*Submit multi-circuiting requirements
**Not available with aircraft cable. Wet location suitable in full coverage and/or mullion mounted applications (direct to sky not recommended); not suitable for extreme weather applications. Refer to Wet Location brochure and contact Design Assist for more information.

LINEAR DIMENSIONS

Elements - 4', 8', and 12' nominal length individual fixtures that can be joined to create continuous row lengths.

Integrations - Nominal or exact lengths to the nearest 1/8th of an inch available as individual fixtures or joined to create continuous row lengths, minimum fixture lengths is 12 inches. Patterns comprised of 90 degree precisely welded fully illuminated corners provide a multitude of geometric options and architectural transitions.

Custom - Contact [Design Assist](#) for modifications to product not detailed within Elements or Integrations specification sheets.

OPTICS

Cutting edge extruded acrylic lens technology is achieved with the tri-formed self-shielding lens. A linear spread diffuser, opaque white reflector, and black absorber combine to deliver a soft direct asymmetric distribution with effective backlight control from a single alluring optical element.

LED LIGHT SOURCE

Custom manufactured linear board array uses high performance Nichia® LED in combination with a performance driven heat sink technology. Tested in accordance with LM79 and LM-80; L70>60,000hr; operated at reduced output for high efficacy and lumen maintenance. 3000K, 3500K, and 4000K with 80+ CRI standard; other color temperatures and 90+ CRI available upon request, contact factory. LED color variation maintained at a 3-step MacAdam ellipse (SDCM 3x). LEDs are available in Low, Standard, and High outputs. Refer to photometry for delivered lumens. Custom output available in the range 25% to 125% of high output, contact factory.

LED DIMMING DRIVER

Factory tuned constant current electronic 0-10V control dimming driver is standard. Specification grade dimming down to 1%. Driver life of 50,000 hrs with ambient operating temperature range of -30°C to 50°C, maximum case temperature of 75°C. Electrical specifications at maximum driver load: PF >0.9, THD <20%, >85% Efficiency. Other available drivers include Lutron Hi-lume 1% EcoSystem LED Driver (LDE1) with Soft On, Fade to Black dimming technology; and DMX and DALI protocol drivers. Other Lutron and specialty drivers available, contact factory.

EMERGENCY

This luminaire is provided with a factory installed LED emergency lighting battery pack for both normal and emergency operation, 120-277v only. This fixture integrated unit contains long-life Ni-Cad recyclable battery, 24 hour charger, and converter circuit. Test switch and charge indicator provided. Test button to be remote located within 3 feet of the luminaire, by others in accordance with local code. Emergency mode provides constant power to a nominal 12W LED load for a period of 90 minutes, delivering 1200 lumens of unwavering illumination throughout the full 90 minute emergency duration. Unless otherwise specified, the emergency battery pack will illuminate one 2 foot end in the direct portion of the fixture.

Emergency circuiting provided as a separate circuit from normal power circuit according to NEC requirements, specify circuit length and location.

MOUNTING

Suspension with aircraft cables or pendant stems, and full or partial span mounting available.

Aircraft cable set includes 48" standard length 1/16" stainless steel adjustable aircraft cables with secure micro grippers to field set suspension length, comes factory installed in fixture. 4-1/2" x 4-1/2" square white canopies. Cord strain also included. Power cord options available for aircraft cable. Black power cord provided for black and a-lightanium finish, white power cord provided for all other fixture finishes unless otherwise specified.

Rigid pendant stem set includes 1/4" hollow white threaded rod for suspension and power feed, standard specification length, 1" minimum. 5" square mono point white canopies.

Swivel stem set includes 1/4" hollow white threaded rod for suspension and power feed, standard specification length, 1" minimum. 5" square mono point white 45 degree angle swivel stem.

Specify if other suspension length is required. Canopies provided as required for quantity of power feed and non power feed locations (crossbar included). Specify if other shape, size, or color is required.

Direct wall mounting is ADA compliant. Fixture mounts directly to wall surface requiring field drilled mounting and power feed holes. Factory pre-drilled holes can be drilled and tapped for 1/2" chase nipple, submit dimension requirements when ordering.

Mullion blocks are used to mount fixture to a horizontal or vertical window mullion and can also be used to offset fixture from wall. 1/2" or 1" deep milled aluminum blocks are available standard, 3/8" and 2" deep blocks also available upon request. (2) blocks provided for fixtures 8ft or less, fixtures larger than 8ft provided with (3) blocks every 12ft. Quantity of power feed and non power feed blocks provided as required. Fixture mounting requires field drilled mounting and power feed holes. Factory pre-drilled holes can be drilled and tapped for 1/2" chase nipple, submit dimension requirements when ordering.

STRUCTURE

Robust, high quality 60% recycled aluminum extruded housing. 0.040" thick aluminum internal gear trays. Flat or flanged aluminum end caps. Aluminum joiner brackets. 4 lbs/ft approximate fixture weight.

FINISH

Electrostatically applied powder coat finish. Standard finish options include a-lightanium™, white, and black. Other colors and custom finish options available, specify RAL# or contact factory regarding custom finish requirement.

LISTING

UL/CUL rated for Damp Locations. Tested in accordance with UL 1598 and certified to CEC/CSA C22.1, NEC, ANSI/NFPA 70, and NOM-001-SEDE.

**EXISTING CONDITIONS -
Heckwelder Roof Screen Issue**





Height of existing parapet above roof line is 40"

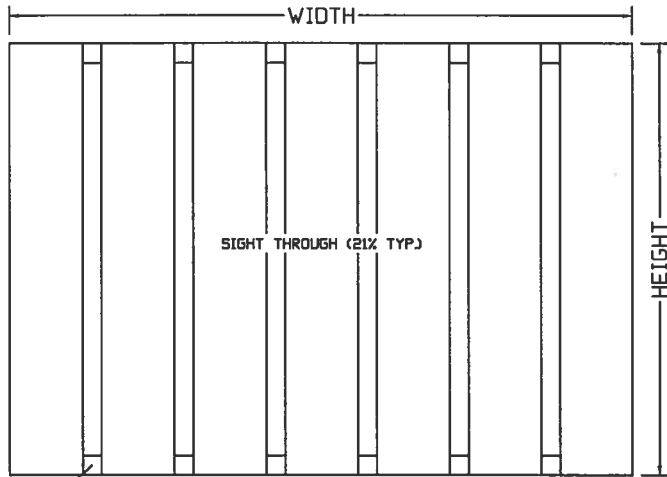
Proposed 20" aluminum louver system



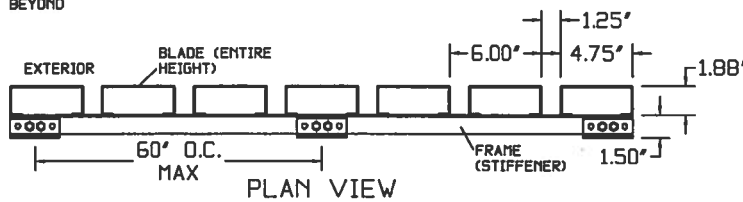
Height of existing parapet above roof line is 40"

Alternate 40" aluminum louver system

V2TV6 - 2" DEEP VERTICAL TUBE BLADE 6" SPACING EXTRUDED ALUMINUM LOUVERED EQUIPMENT SCREEN



ELEVATION VIEW



PLAN VIEW

BLADE - 0.081" THICKNESS TYPE 6063-T5 EXTRUDED ALUMINUM
 FRAME - CONCEALED 0.125" THICKNESS TYPE 6063-T5 EXTRUDED ALUMINUM
 DESIGNED FOR 30 PSF WIND LOAD
 SIZES 12' WIDE X 12' HIGH UP TO UNLIMITED SIZE AVAILABLE

OPTIONS:
 HIGHER WIND LOAD RATINGS
 ARCHITECTURAL FINISHES
 HINGED SINGLE AND DOUBLE DOORS

NOTE:
 STRUCTURAL FRAMING TO SUPPORTING STRUCTURE (ROOF DECK, WALLS, CONCRETE PAD, ETC.) BY OTHERS. STRUCTURAL FRAMING IS REQUIRED FOR ATTACHMENT POINTS EVERY 60" OF WIDTH AND HEIGHT TO MEET 30 PSF WIND LOAD.

END PANEL	BLADE STIFFENER	HORIZONTAL MULLION (MULTIPLE PANELS HIGH)	OUTSIDE CORNER
<p>SECTION VIEW</p> <p>HIDDEN</p>	<p>SECTION VIEW</p> <p>HIDDEN</p>	<p>SECTION VIEW</p> <p>HIDDEN</p>	<p>PLAN VIEW</p>
<p>TYPICAL MOUNTING (VERTICAL MULLION SHOWN)</p>		<p>VERTICAL MULLION (MULTIPLE PANELS WIDE)</p>	
<p>SECTION VIEW</p>		<p>PLAN VIEW</p> <p>HIDDEN</p>	
<p>ARCHITECTURAL L.O.U.V.E.R.S</p> <p>266 W Mitchell Ave - Cincinnati, OH 45232 PH: (888) 568-8371 Fax: (888) 568-8370</p>		<p>PROJECT</p> <p>CONTRACTOR</p> <p>ARCHITECT</p>	<p>DRAWING TYPE: TECHNICAL SHEET</p> <p>DRAWING TITLE: V2TV6</p>
<p>DRAWN BY: JRR</p>		<p>DATE: 01/2016</p>	

ARCHITECTURAL L·O·U·V·E·R·S

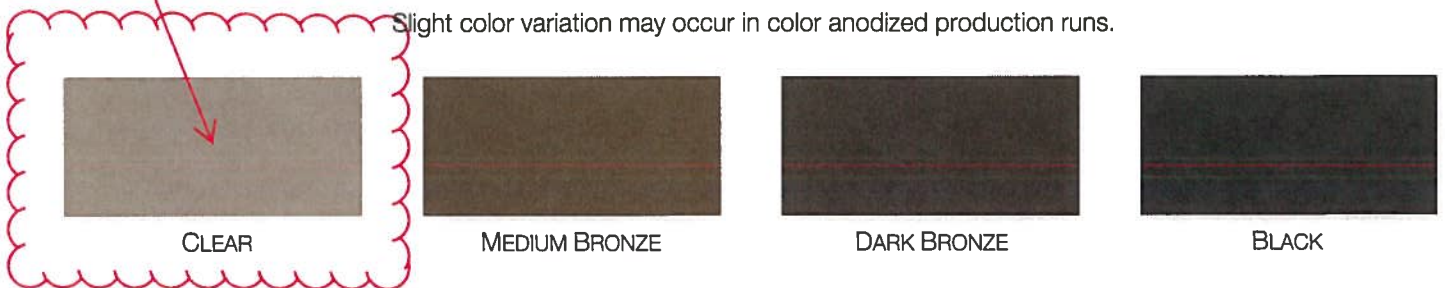
STANDARD BAKED ENAMEL / KYNAR® COLORS



Proposed finish

STANDARD ANODIZED COLORS

Slight color variation may occur in color anodized production runs.



ARCHITECTURAL LOUVERS • 266 WEST MITCHELL AVENUE, CINCINNATI, OH 45232 • 888-568-8371

Due to variations in computer monitors, we cannot guarantee the accuracy of colors presented on-screen with actual products. Please refer to a color card or paint swatches to ensure color accuracy.

Sturdistrict Framing System



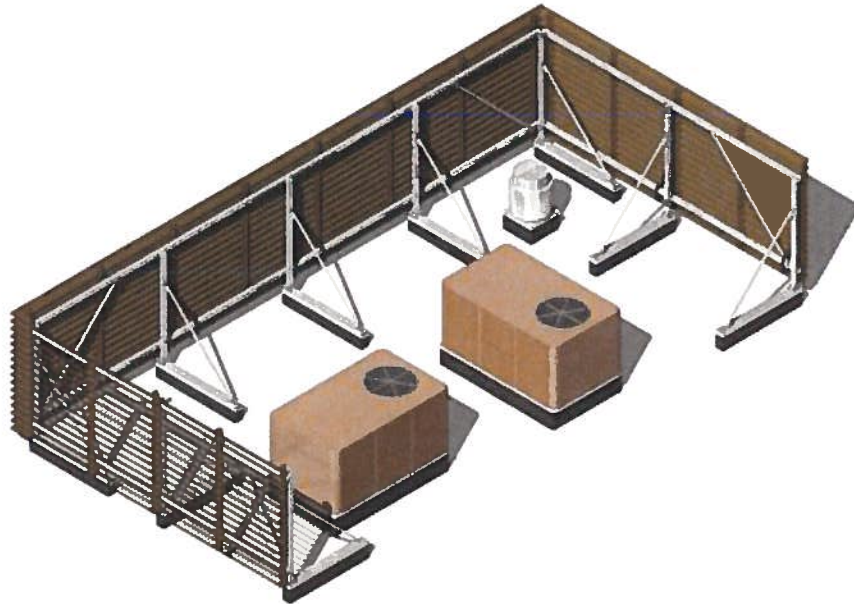
[Home](#) [Products](#) [How It Works](#) [Design Help](#)

Image provided for reference only to show how screen will sit on the roof

[Online Store](#)

Structural Framing for Equipment Screens

Allow us to provide the roof framing system for your louvered equipment screens. The all-aluminum design was created for use with Architectural Louvers' standard mount equipment screen models. It is intended for use on flat roofs with asphalt or membrane surface material.



Features:

- Easy assembly
- Perfect fit to all standard mount equipment screen models.
- Attaches to flat roofs with membrane or asphalt surface material (penetrations required).
- No risk of corrosion from dissimilar metals

Specs:

- Framing can support equipment screens up to 96" height maximum
- Posts spaced at 96" on center maximum
- **30 psf** wind load design

Options:
